

INDUSTRIAL FITTINGS - valves

Globe valves



Globe valve 2028 type

Body material: AISI 316 steel
Ball material: AISI 316 steel
Handle material: Aluminium
Stem seal: PTFE
Connection: BSP female thread
Working temp.: From -20°C up to +200°C

A general purpose globe valve intended for application in industrial installations. The valve can be used to control or throttle flow. Working pressure depends on working temperature.

code	DN [mm]	thread size [inch]	working pressure [bar]
HT-2028-08	8	1/4	10
HT-2028-10	10	3/8	10
HT-2028-15	15	1/2	10
HT-2028-20	20	3/4	10
HT-2028-25	25	1	10
HT-2028-32	32	1.1/4	10
HT-2028-40	40	1.1/2	10
HT-2028-50	50	2	10

Ball valves



Ball valve 5600 type

Body material: Nickel-plated brass
Ball material: Chrome-plated brass
Handle material: Aluminium
Ball seal: PTFE
Stem seal: NBR
Working temp.: From -20°C up to +110°C

A general purpose ball valve (tap) with hose tail, intended for application in industrial installations. Suitable for water, chemicals, petrochemical products, etc. Working pressure depends on working temperature.

code	flow diameter [mm]	thread size [inch]	hose tail size [mm]	working pressure [bar]
RV-5600-10	10	3/8	15	16
RV-5600-13	10	1/2	15	16
RV-5600-19	12.5	3/4	20	16
RV-5600-25	15	1	26	16
RV-5600-32	25	1.1/4	26	16

INDUSTRIAL FITTINGS - valves

Ball valves

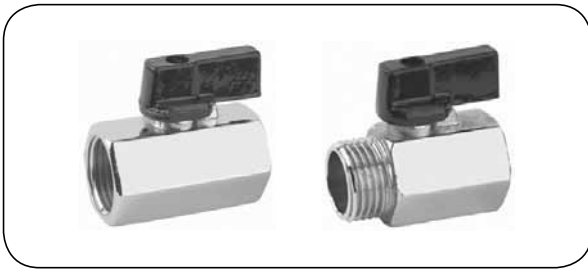


Mini ball valve 6400/6410 type

Body material: Nickel-plated brass
Ball material: Chrome-plated brass
Handle material: Polyamide (PA 66)
Ball seal: PTFE
Stem seal: NBR
Working temp.: From -20°C up to +80°C

A general purpose mini ball valve designed for industrial installations. Used for air, gases, water, chemicals, pet-rochemical products, etc. Vacuum 0.9 bar.

code	flow diameter [mm]	length [mm]	thread size [inch]	working pressure [bar]
6400 type (2 x BSP female thread)				
AI-6400-02	5.5	35	1/8	20
AI-6400-04	5.5	37	1/4	20
AI-6400-06	8	42	3/8	20
AI-6400-08	10	49	1/2	20
AI-6400-12	14	58	3/4	20
6410 type (BSP male / female thread)				
AI-6410-02	5.5	34	1/8	20
AI-6410-04	5.5	35	1/4	20
AI-6410-06	8	39	3/8	20
AI-6410-08	10	45	1/2	20
AI-6410-12	14	52	3/4	20



Mini ball valve 4010/4011 type

Body material: Nickel-plated brass
Ball material: Chrome-plated brass
Handle material: Aluminium
Ball seal: PTFE
Stem seal: NBR
Working temp.: From -10°C up to +90°C

A general purpose mini ball valve designed for industrial installations. Used for air, gases, water, chemicals, pet-rochemical products, etc.

code	flow diameter [mm]	length [mm]	thread size [inch]	working pressure [bar]
4010 type (2 x BSP female thread)				
RV-4010-06	8	40	1/4	10
RV-4010-10	8	40	3/8	10
RV-4010-13	10	44	1/2	10
RV-4010-19	14	48	3/4	10
4011 type (BSP male / female thread)				
RV-4011-06	8	39	1/4	10
RV-4011-10	8	39	3/8	10
RV-4011-13	10	43	1/2	10
RV-4011-19	14	50	3/4	10

INDUSTRIAL FITTINGS - valves



Ball valve 4174/4334 type

Body material: Nickel-plated brass
Ball material: Chrome-plated brass
Handle material: Aluminium
Ball seal: PTFE
Stem seal: NBR
Working temp.: From -20°C up to +110°C

A general purpose ball valve designed for industrial installations. Used for air, gases, water, steam, chemicals, petrochemical products, etc. Working pressure depends on working temperature.

code	flow diameter [mm]	length [mm]	thread size [inch]	working pressure [bar]
4174 type (2 x BSP female thread)				
RV-4174-06	8	38	1/4	40
RV-4174-10	10	42	3/8	40
RV-4174-13	14.5	48	1/2	40
RV-4174-19	19	57	3/4	32
RV-4174-25	24	69	1	32
4334 type (BSP male / female thread)				
RV-4334-06	8	45	1/4	40
RV-4334-10	10	48	3/8	40
RV-4334-13	14.5	55	1/2	40
RV-4334-19	19	65	3/4	32
RV-4334-25	24	77	1	32



Ball valve 4194/4354/4424 type

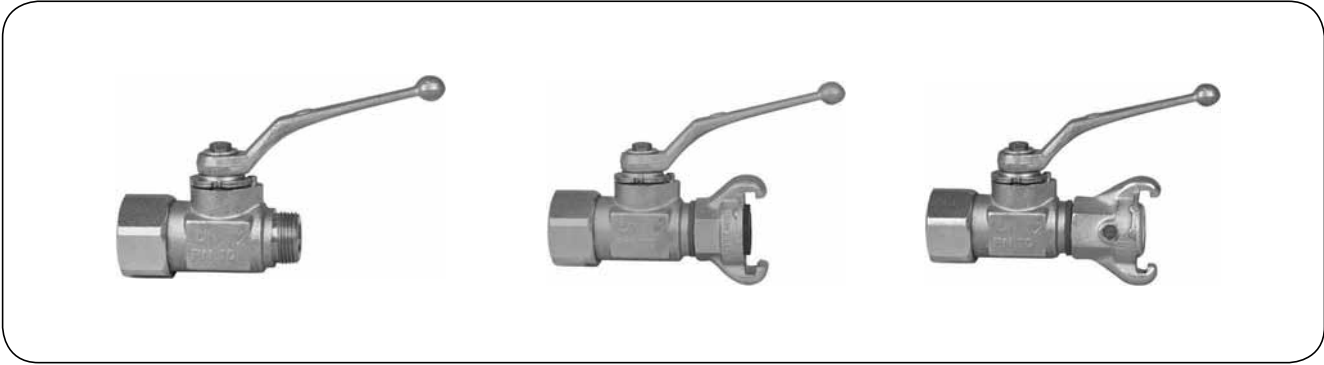
Body material: Nickel-plated brass
Ball material: Chrome-plated brass
Ball seal: PTFE
Stem seal: FKM+NBR
Working temp.: From -20°C up to +150°C

A general purpose ball valve designed for industrial installations. Used for air, gases, water, steam, chemicals, petrochemical products, etc. Working pressure depends on working temperature.

code	flow diameter [mm]	length [mm]	thread size [inch]	working pressure [bar]
4194 type (2 x BSP female thread)				
RV-4194-06	10	45	1/4	64
RV-4194-10	10	45	3/8	64
RV-4194-13	15	59	1/2	64
RV-4194-19	20	69	3/4	40
RV-4194-25	25	83	1	40
4354 type (BSPT male / BSP female thread)				
RV-4354-10	10	52	3/8	64
RV-4354-13	15	66	1/2	64
RV-4354-19	20	76	3/4	40
RV-4354-25	25	91	1	40
4424 type (2 x BSPT male thread)				
RV-4424-13	15	71	1/2	64
RV-4424-19	20	82	3/4	40
RV-4424-25	25	97.5	1	40

INDUSTRIAL FITTINGS - valves

Ball valves



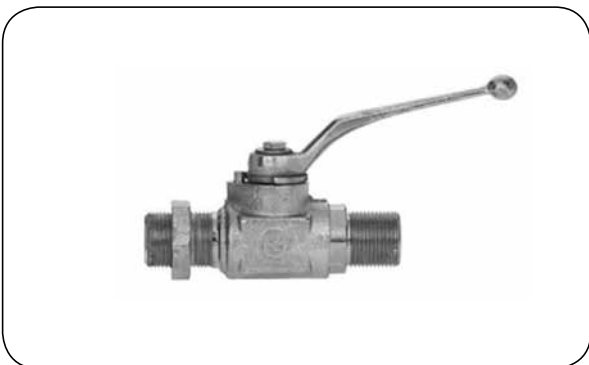
A ball valve designed for air and water. Made of zinc-plated steel (ball made of brass). Working pressure 10 bar. Working temp.: from -20°C up to +100°C. Connection: male thread, claw coupling (lug dimension 42 mm) with rubber (NBR) or brass seal.

code	MU-125	MU-124	MU-105	MU-104	MU-115	MU-114
inlet	3/4" female	1" female	3/4" female	1" female	3/4" female	1" female
outlet	3/4" male	3/4" male	MU-904	MU-904	MU-954	MU-954



A double ball valve designed for air and water. Made of zinc-plated steel (ball made of brass). Working pressure 10 bar. Working temp.: from -20°C up to +100°C. Connection: male thread, claw coupling (lug dimension 42 mm) with rubber (NBR) or brass seal.

code	MU-224	MU-223	MU-204	MU-203	MU-214	MU-213
inlet	3/4" female	1" female	3/4" female	1" female	3/4" female	1" female
outlet	2 x 3/4" male	2 x 3/4" male	2 x MU-904	2 x MU-904	2 x MU-954	2 x MU-954

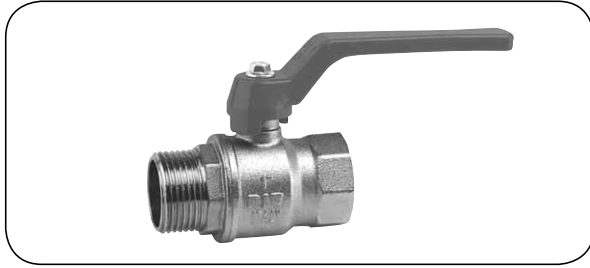


code	Inlet	outlet	cone
MU-301	3/4" male	3/4" male	1:4
MU-302	3/4" male	Rd32x1/8" male	1:3
MU-303	1" male	Rd32x1/8" male	1:3
MU-307	1" male	1" male	1:3
MU-304	1" male	Rd38x1/8" male	1:3
MU-305	2" male	Rd75x1/6" male	1:3

A ball valve designed for pneumatic hammers. Made of zinc-plated steel (ball made of brass). Working pressure 25 bar.

INDUSTRIAL FITTINGS - valves

Ball valves



Ball valve 4170/4330 type

Body material: Nickel-plated brass
Ball material: Chrome-plated brass
Handle material: Aluminium
Ball seal: PTFE
Stem seal: NBR
Working temp.: From -20°C up to +110°C

A general purpose ball valve designed for industrial installations. Used for air, gases, water, steam, chemicals, petrochemical products, etc. Working pressure depends on working temperature.

code	flow diameter [mm]	length [mm]	thread size [inch]	working pressure [bar]
4170 type* (2 x BSP female thread)				
RV-4170-006	8	38	1/4	40
RV-4170-010	10	42	3/8	40
RV-4170-013	14.5	48	1/2	40
RV-4170-019	19	57	3/4	32
RV-4170-025	24	69	1	32
RV-4170-032	30.5	79	1.1/4	25
RV-4170-038	37	89	1.1/2	25
RV-4170-050	47	109	2	25
RV-4170-065	60	126	2.1/2	25
RV-4170-075	75	147	3	16
RV-4170-100	94	177	4	16
4330* type (BSP male / female thread)				
RV-4330-006	8	45	1/4	40
RV-4330-010	10	48	3/8	40
RV-4330-013	14.5	55	1/2	40
RV-4330-019	19	65	3/4	32
RV-4330-025	24	77	1	32
RV-4330-032	30.5	87	1.1/4	25
RV-4330-038	37	101	1.1/2	25
RV-4330-050	47	117	2	25
RV-4330-065	60	136	2.1/2	25
RV-4330-075	75	157	3	16
RV-4330-100	94	189	4	16

* available with steel handle - 4171, 4331 type.

INDUSTRIAL FITTINGS - valves

Ball valves



Ball valve 4190/4350/4420 type

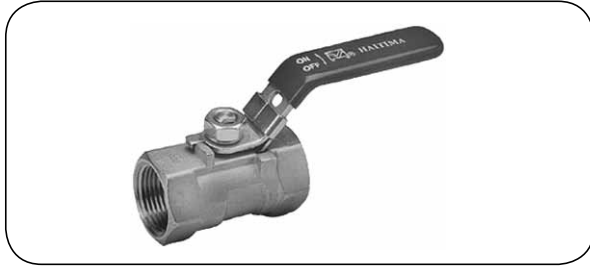
Body material: Nickel-plated brass
Ball material: Chrome-plated brass
Handle material: Aluminium
Ball seal: PTFE
Stem seal: FKM + NBR
Working temp.: From -20°C up to +150°C

A general purpose ball valve designed for industrial installations. Used for air, gases, water, steam, chemicals, petrochemical products, etc. Working pressure depends on working temperature.

code	flow diameter [mm]	length [mm]	thread size [inch]	working pressure [bar]
4190 type (2 x BSP female thread)				
RV-4190-006	10	45	1/4	64
RV-4190-010	10	45	3/8	64
RV-4190-013	15	59	1/2	64
RV-4190-019	20	69	3/4	40
RV-4190-025	25	83	1	40
RV-4190-032	32	94	1.1/4	40
RV-4190-038	40	102	1.1/2	40
RV-4190-050	50	124	2	40
RV-4190-065	65	148	2.1/2	40
RV-4190-075	80	171	3	32
RV-4190-100	100	206	4	25
4350 type (BSPT male / BSP female thread)				
RV-4350-010	10	52	3/8	64
RV-4350-013	15	66	1/2	64
RV-4350-019	20	76	3/4	40
RV-4350-025	25	91	1	40
RV-4350-032	32	101	1.1/4	40
RV-4350-038	40	113	1.1/2	40
RV-4350-050	50	134	2	40
RV-4350-065	65	164	2.1/2	40
RV-4350-075	80	187	3	32
RV-4350-100	100	221	4	25
4420 type (2 x BSPT male thread)				
RV-4420-13	15	71	1/2	64
RV-4420-19	20	82	3/4	40
RV-4420-25	25	97.5	1	40
RV-4420-32	32	108	1.1/4	40
RV-4420-38	40	122	1.1/2	40
RV-4420-50	50	146	2	40

INDUSTRIAL FITTINGS - valves

Ball valves



Ball valve 2017K type

Body material: AISI 316 steel
Ball material: AISI 316 steel
Handle material: AISI 304 steel
Ball seal: PTFE/RTFE
Stem seal: PTFE
Connection: BSP female thread
Working temp.: From -20°C up to +200°C

A general purpose ball valve designed for industrial applications. Used for air, gases, water, steam, chemicals, petrochemical products, etc. Working pressure depends on working temperature.

code	DN [mm]	length [mm]	thread size [inch]	working pressure [bar]
HT-2017K-08	8	39	1/4	63
HT-2017K-10	10	44	3/8	63
HT-2017K-15	15	55	1/2	63
HT-2017K-20	20	59	3/4	63
HT-2017K-25	25	69	1	63
HT-2017K-32	32	77	1.1/4	63
HT-2017K-40	40	81	1.1/2	63
HT-2017K-50	50	97	2	63



Ball valve 2006SC / SM3 type

Body material: AISI 316 steel
Ball material: AISI 316 steel
Handle material: AISI 304 steel
Ball seal: PTFE/RTFE
Stem seal: PTFE
Connection: BSP female thread
Working temp.: From -20°C up to +200°C

A general purpose ball valve designed for industrial installations. Used for air, gases, water, steam, chemicals, petrochemical products, etc. Working pressure depends on working temperature.

code	DN [mm]	length [mm]	thread size [inch]	working pressure [bar]
HT-2006SC-08	8	50	1/4	63
HT-2006SC-10	10	50	3/8	63
HT-2006SC-15	15	59	1/2	63
HT-2006SC-20	20	66	3/4	63
HT-2006SC-25	25	75.5	1	63
HT-2006SC-32	32	88.7	1.1/4	63
HT-2006SC-40	40	98.5	1.1/2	63
HT-2006SC-50	50	120.6	2	63
HT-2006SC-65	65	146.5	2.1/2	63
HT-2006SC-80	80	167.5	3	63
HT-2006SM3-100	100	240	4	63

INDUSTRIAL FITTINGS - valves

Ball valves



Ball valve 2013N type

Body material: AISI 316 steel
Ball material: AISI 316 steel
Handle material: AISI 304 steel
Ball seal: PTFE/RTFE
Stem seal: PTFE
Connection: BSP female thread
Working temp.: From -20°C up to +200°C

A general purpose ball valve designed for industrial installations. Used for air, gases, water, steam, chemicals, petrochemical products, etc. Working pressure depends on working temperature.

code	DN [mm]	length [mm]	thread size [inch]	working pressure [bar]
HT-2013N-08	8	65	1/4	63
HT-2013N-10	10	65	3/8	63
HT-2013N-15	15	65	1/2	63
HT-2013N-20	20	75	3/4	63
HT-2013N-25	25	85	1	63
HT-2013N-32	32	101	1.1/4	63
HT-2013N-40	40	112	1.1/2	63
HT-2013N-50	50	130	2	63
HT-2013N-65	65	162	2.1/2	63



Ball valve 2057N type

Body material: AISI 316 steel
Ball material: AISI 316 steel
Handle material: AISI 304 steel
Ball seal: PTFE/RTFE
Stem seal: PTFE
Connection: BSP female thread
Working temp.: From -20°C up to +200°C

A general purpose ball valve designed for industrial installations. Used for air, gases, water, steam, chemicals, petrochemical products, etc. Working pressure depends on working temperature.

code 2057N type (L boring)	code 2057N type (T boring)	DN [mm]	length [mm]	thread size [inch]	working press. [bar]
HT-2057N-08L	HT-2057N-08T	8	76	1/4	63
HT-2057N-10L	HT-2057N-10T	10	76	3/8	63
HT-2057N-15L	HT-2057N-15T	15	76	1/2	63
HT-2057N-20L	HT-2057N-20T	20	86	3/4	63
HT-2057N-25L	HT-2057N-25T	25	99	1	63
HT-2057N-32L	HT-2057N-32T	32	117	1.1/4	63
HT-2057N-40L	HT-2057N-40T	40	124	1.1/2	63
HT-2057N-50L	HT-2057N-50T	50	148	2	63

INDUSTRIAL FITTINGS - valves

Ball valves



Ball valve LS

Body material: AISI 316 steel
Ball material: AISI 316 steel
Handle material: AISI 316 steel
Seal: Body - Viton
 Ball - nylon
Stem seal: TFE
Connection: NPT female thread
Working temp.: Up to +100°C

Ball valves, LS type, can be reliably used for the most demanding applications. They are intended for such media as: H₂S, CO₂, salt water and other highly corrosive fluids. Maintenance free - does not require any lubrication during whole service life. Manufactured according to NACE standard (NACE - international organisation which provides corrosion prevention and control solutions for mining, petrochemical, gas and chemical industry).

code	thread size [inch]	flow diameter [mm]	working pressure [bar]	length [mm]	weight [kg]
BL-LS-02592	1/4	9.4	207	66.5	0.41
BL-LS-05561	1/2	9.4	138	63.5	0.34
BL-LS-05591	1/2	9.4	207	76.2	0.45
BL-LS-07592	3/4	19	207	95.3	1.14
BL-LS-10561	1	19	138	95.3	0.91
BL-LS-10591	1	19	207	104.6	1.14



Ball valve 4500 type

Body material: Nickel-plated brass
Ball material: Chrome-plated brass
Ball seal: PTFE
Stem seal: FKM
Connection: BSP female thread
Working temp.: From -20°C up to +95°C

A general purpose ball valve with a mounting pad for an actuator designed for industrial installations. Used for air, gases, water, steam, chemicals, petrochemical products, etc. Working pressure depends on working temperature.

code	DN	thread size [inch]	actuator type ISO 5211	length [mm]	working pressure [bar]
RV-4500-15	15	1/2	M1 (F03)	59	40
RV-4500-20	20	3/4	M1 (F03)	69	40
RV-4500-25	25	1	M1 (F03)	83	40
RV-4500-32	32	1.1/4	M4 (F05)	94	40
RV-4500-40	40	1.1/2	M4 (F05)	102	40
RV-4500-50	50	2	M4 (F05)	124	40

INDUSTRIAL FITTINGS - valves

Ball valves



Ball valve 2019S type

Body material: AISI 316 steel
Ball material: AISI 316 steel
Handle material: AISI 304 steel
Ball seal: PTFE/RTFE
Stem seal: PTFE
Connection: PN16 flange (DIN 2501)
Working temp.: From -20°C up to +200°C

A general purpose flanged ball valve designed for industrial installations. Used for air, gases, water, steam, chemicals, petrochemical products, etc. Working pressure depends on working temperature.

code	DN [mm]	length [mm]	working pressure [bar]
HT-2019S-015	15	115	16
HT-2019S-020	20	120	16
HT-2019S-025	25	125	16
HT-2019S-032	32	130	16
HT-2019S-040	40	140	16
HT-2019S-050	50	150	16
HT-2019S-065	65	170	16
HT-2019S-080	80	180	16
HT-2019S-100	100	190	16



Ball valve 5550 type

Body material: Cast iron
Ball material: Chrome-plated brass
Handle material: Carbon steel
Ball seal: PTFE
Stem seal: NBR
Connection: PN16 flanges
Working temp.: From -10°C up to +100°C

A general purpose flanged ball valve adjusted to fit an actuator in compliance with ISO 5211. It is designed for application in industrial installations. Used for air, gases, water, steam, chemicals, petrochemical products, etc. Working pressure depends on working temperature.

code	DN [mm]	length [mm]	flange O.D. [mm]	number of bolts x thread	ISO 5211	working pressure [bar]
RV-5550-020	20	120	105	4xM12	F04	16
RV-5550-025	25	125	115	4xM12	F04	16
RV-5550-032	32	130	140	4xM16	F04	16
RV-5550-040	40	140	150	4xM16	F05	16
RV-5550-050	50	150	165	4xM16	F05	16
RV-5550-065	65	170	185	4xM16	F05	16
RV-5550-080	80	180	200	8xM16	F07	16
RV-5550-100	100	190	220	8xM16	F07	16
RV-5550-125	125	200	250	8xM16	F10	16
RV-5550-150	150	210	285	8xM20	F10	16
RV-5550-200	200	400	340	12xM20	F10	16

INDUSTRIAL FITTINGS - valves

Ball valves



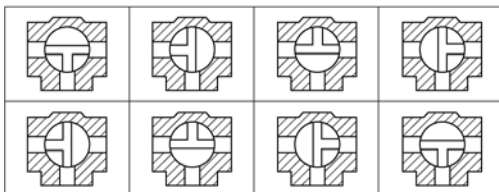
Ball valve 5310/5311 type

Body material: Nickel-plated brass
Ball material: Chrome-plated brass
Handle material: Aluminjum
Ball seal: PTFE
Stem seal: NBR
Connection: From -10°C up to +110°C
Working temp.: BSP female thread

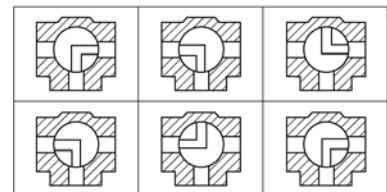
A general purpose ball valve designed for industrial installations. Used for air, gases, water, steam, chemicals, petrochemical products, etc. Working pressure depends on working temperature.

code	thread size [inch]	flow diameter [mm]	length [mm]	working pressure [bar]
5310 type (T boring)				
RV-5310-006	1/4	10	77	25
RV-5310-010	3/8	12	77	25
RV-5310-013	1/2	14	77	25
RV-5310-019	3/4	18	92	25
RV-5310-025	1	23	104	25
RV-5310-032	1.1/4	29	118	25
RV-5310-038	1.1/2	36	138	25
RV-5310-050	2	45	162	25
5311 type (L boring)				
RV-5311-006	1/4	10	77	25
RV-5311-010	3/8	12	77	25
RV-5311-013	1/2	14	77	25
RV-5311-019	3/4	18	92	25
RV-5311-025	1	23	104	25
RV-5311-032	1.1/4	29	118	25
RV-5311-038	1.1/2	36	138	25
RV-5311-050	2	45	162	25

T boring

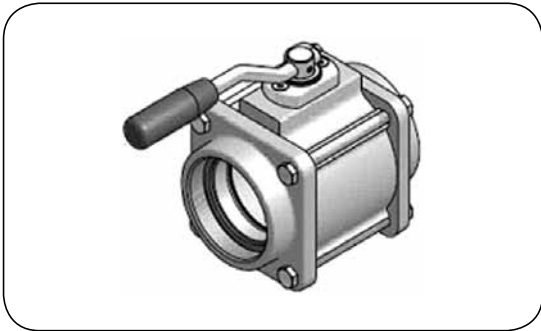


L boring



INDUSTRIAL FITTINGS - valves

Ball valves



Ball valve Full Flow type

Material: Body, ball - aluminium
Spindle - stainless steel
Connections - Al, St, SS

Sealing: Viton / PTFE - valve PUR - connections

Connection: Thread: BSP, NPT
Flanges: DIN, ASA, TW

Working press.: 10 bar

Working temp.: From -20°C up to +80°C

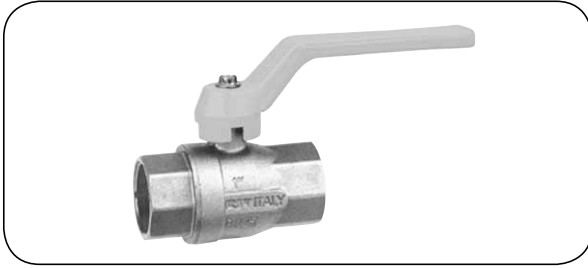
Full flow ball valves are widely used in road, rail, air transport as well as in petrochemical industry. Meet all requirements regarding safety, environment protection and reliability during hazardous and valuable fluid transfer. A version with pneumatic actuator available.

Meets ATEX, ADR, RID, IMDG, TDT standards.

picture	code	connection	material	seal		weight [kg]	
				valve	thread		
	MK-FFV-B210A1101	2" BSP female	aluminium	PUR		2.20	
	MK-FFV-B210A1301	2" BSP female	carbon steel			2.60	
	MK-FFV-B211A1101	2" NPT female	aluminium			2.30	
	MK-FFV-B414A1101	3" BSP female	aluminium			-	
	MK-FFV-B414A1301	3" BSP female	carbon steel			4.70	
	MK-FFV-B415A1101	3" NPT female	aluminium			4.00	
	MK-FFV-B516A1101	4" BSP female	aluminium			7.10	
	MK-FFV-B516A1301	4" BSP female	carbon steel			10.00	
	MK-FFV-B517A1101	4" NPT female	aluminium			7.50	
	MK-FFV-B278A1101	2" BSP male	aluminium			2.00	
	MK-FFV-B482A1101	3" BSP male	aluminium			3.80	
	MK-FFV-B482A1301	3" BSP male	carbon steel			4.70	
	MK-FFV-B584A1101	4" BSP male	aluminium			7.50	
	MK-FFV-B584A1301	4" BSP male	carbon steel			10.00	
	MK-FFV-B287A1101	TW1 / 50	aluminium			-	3.30
	MK-FFV-B465A1101	TW1 / 80				5.50	
MK-FFV-B566A1101	TW3 / 100	8.00					
	MK-FFV-B433A1101	DN 65 PN 10/16	aluminium	-	-		
	MK-FFV-B436A1101	DN 80 PN 10/16		5.40			
	MK-FFV-B459A1101	2.1/2" ASA 150		-			
	MK-FFV-B461A1101	3" ASA 150		5.90			
	MK-FFV-B539A1101	DN 100 PN 10/16		9.60			
	MK-FFV-B563A1101	4" ASA 150		10.00			
Repair kit Set of valve seals	MK-FFV-O-B2-01	2"	Viton / PTFE	-	-		
	MK-FFV-O-B4-01	3"		-			
	MK-FFV-O-B5-01	4"		-			
Repair kit Flat seal	MK-1052-09	2"	PUR	-	-	0.003	
	MK-1110-09	3"		0.006			
	MK-1295-09	4"		0.009			
Set of spare parts	MK-FFV-S-B2-11	2"	aluminium	-	-	-	
	MK-FFV-S-B2-13	2"	carbon steel				
	MK-FFV-S-B4-11	3"	aluminium				
	MK-FFV-S-B4-13	3"	carbon steel				
	MK-FFV-S-B5-11	4"	aluminium				
MK-FFV-S-B5-13	4"	carbon steel					

INDUSTRIAL FITTINGS - valves

Ball valves



Ball valve 7160 type

Body material: Nickel-plated brass
Ball material: Chrome-plated brass
Handle material: Aluminium
Ball seal: PTFE
Stem seal: FKM + NBR
Connection: BSP female thread
Working temp.: From -20°C up to +60°C

A general purpose ball valve designed for gas installations. Meets the requirements of Directive 97/23/CE (PED), 2009/142/ CE, compliant with EN 331 + A1 standard.

code	flow diameter [mm]	length [mm]	thread size [inch]	working pressure [bar]
RV-7160-006	10	45	1/4	5
RV-7160-010	10	45	3/8	5
RV-7160-013	15	59	1/2	5
RV-7160-019	20	69	3/4	5
RV-7160-025	25	83	1	5
RV-7160-032	32	94	1.1/4	5
RV-7160-038	40	102	1.1/2	5
RV-7160-050	50	124	2	5
RV-7160-065	65	148	2.1/2	5
RV-7160-075	80	171	3	5
RV-7160-100	100	206	4	5



Ball valve 7164 type

Body material: Nickel-plated brass
Ball material: Chrome-plated brass
Handle material: Aluminium
Ball seal: PTFE
Stem seal: FKM + NBR
Connection: BSP female thread
Working temp.: From -20°C up to +60°C

A general purpose ball valve designed for gas installations. Meets the requirements of Directive 97/23/CE (PED), 2009/142/ CE, compliant with EN 331 + A1 standard.

code	flow diameter [mm]	length [mm]	thread size [inch]	working pressure [bar]
RV-7164-06	10	45	1/4	5
RV-7164-10	10	45	3/8	5
RV-7164-13	15	59	1/2	5
RV-7164-19	20	69	3/4	5
RV-7164-25	25	83	1	5