

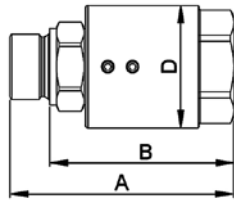
HIGH PRESSURE - rotary unions



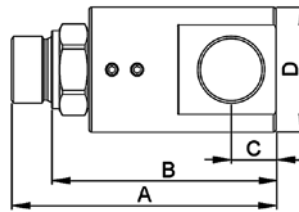
GGIL, GG90 type

Material: Galvanized steel
Seal: NBR
Connection: BSP male / female thread
Working temp.: From -40°C up to +106°C

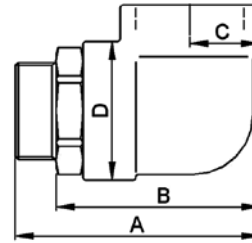
Straight and angular rotary unions. Used in systems that require rotary connection or to eliminate strain of hose assemblies. Characterized by small sizes and low torque. Used in construction, agricultural and industrial machines, lifting equipment and automotive industry.



GGIL type



GG90 (1/4" ÷ 1") type



GG90 (1.1/4" ÷ 2") type

code	thread size [inch]	flow rate [l/min]	max. working pressure [bar]	dimensions			
				A [mm]	B [mm]	C [mm]	D [mm]
straight rotary union GGIL type							
ZO-GGIL-04	1/4	25	400	63	52	-	34
ZO-GGIL-06	3/8	45	400	67	55	-	38
ZO-GGIL-08	1/2	80	360	71	57	-	40
ZO-GGIL-12	3/4	120	310	91	75	-	50
ZO-GGIL-16	1	150	280	100	81	-	55
ZO-GGIL-20	1.1/4	200	250	98	79	-	60
ZO-GGIL-24	1.1/2	250	210	107	85	-	70
ZO-GGIL-32	2	300	180	117	92	-	80
angular rotary union GG90 type							
ZO-GG90-04	1/4	25	400	71	58	11	33
ZO-GG90-06	3/8	45	400	78	66	14	38
ZO-GG90-08	1/2	80	360	92	78	16	40
ZO-GG90-12	3/4	120	310	100	81	19	56
ZO-GG90-16	1	150	280	120	101	23	60
ZO-GG90-20	1.1/4	200	250	120	101	32	65
ZO-GG90-24	1.1/2	250	210	138	115	39	76
ZO-GG90-32	2	300	180	149	124	44	86

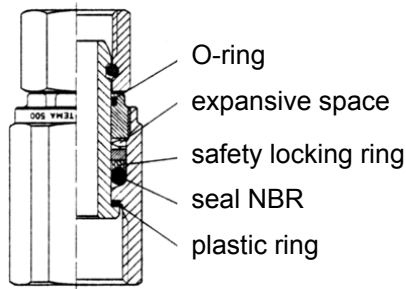
HIGH PRESSURE - rotary unions



TEMA SWIVEL

Body: Brass
Female pin: Hardened steel
 (for version RF - stainless steel)
Nut: Galvanized steel
Seal: NBR
Working temp.: From -40°C up to +90°C

Union used in systems that require rotary connection or to eliminate stress of hose assemblies. Characterized by small sizes and low torque. The maximum rotational speed is (60 r.p.m.). Suitable for hydraulic oil or water (RF version).



code	size [inch]	I.D. [mm]	thread (1)		thread (2)		working pressure [bar]
			female	male	female	male	
TA-R-250	1/4	6	1/4	-	3/8	-	250
TA-R-250RF	1/4	6	1/4	-	3/8	-	250
TA-R-500	1/2	11	1/2	-	3/4	-	250
TA-R-500RF	1/2	11	1/2	-	3/4	-	250
TA-R-500B	1/2	11	1/2	-	-	1/2	250
TA-R-500W	1/2	11	-	M18x1.5	-	1/2	250
TA-R-500W5	1/2	11	-	M22x1.5	-	1/2	250
TA-R-500W6	1/2	11	-	M24x1.5	-	1/2	250
TA-R-500-30	1/2	11	-	7/8-14UNF	-	3/4	250
TA-R-500-31	1/2	11	-	7/8-14UNF	-	7/8-14UNF	250
TA-R-500-32	1/2	11	-	7/8-14UNF	-	1/2	250
TA-R-750	3/4	17	3/4	-	1	-	250
TA-R-750RF	3/4	17	3/4	-	1	-	250
TA-R-1000	1	22	1	-	1.1/4	-	200
TA-R-1000RF	1	22	1	-	1.1/4	-	200