

INDUSTRIAL HOSES - ducting and ventilation

Abrasion resistant hoses



P 2 PU

Material: Transparent polyester-polyurethane (standard and AS version)
Transparent polyether-polyurethane (AE and PAS version)

Wall thickness: 0.4 mm

Reinforcement: Steel wire helix

Working temp.: From -40°C up to +100°C

Lightweight, highly flexible hose designed to transport fumes of oils, dust, sawdust, loose and dry materials, etc. Widely used in construction, woodworking and food industry. Other diameters available in the range of 20 ÷ 800 mm. AE version - resistant to hydrolysis and microbes, compliant with FDA regulations and EU Directives. AS version - antistatic ($R < 10^8 \Omega$) - TRBS 2153. PAS version - resistant to hydrolysis and microbes, compliant with FDA 21 CFR 177.2600, antistatic ($R < 10^9 \Omega$) according to TRBS 2153, with stainless steel wire helix.

code	I.D. [mm]	wire [mm]	working pressure [bar]	vacuum [bar]	bending radius [mm]	weight [kg/m]	standard length [m]
SC-P2PU-025	25	1.2	0.65	0.3	18	0.13	10
SC-P2PU-030	30	1.2	0.6	0.3	21	0.17	10
SC-P2PU-040	40	1.2	0.5	0.25	28	0.23	10
SC-P2PU-050	50	1.2	0.4	0.2	35	0.30	10
SC-P2PU-060	60	1.2	0.4	0.16	42	0.34	10
SC-P2PU-065	65	1.2	0.35	0.14	46	0.37	10
SC-P2PU-070	70	1.2	0.35	0.14	49	0.40	10
SC-P2PU-075	75	1.2	0.3	0.1	53	0.43	10
SC-P2PU-080	80	1.2	0.28	0.1	56	0.46	10
SC-P2PU-085	85	1.2	0.26	0.09	60	0.47	10
SC-P2PU-090	90	1.2	0.24	0.09	62	0.49	10
SC-P2PU-100	100	1.6	0.2	0.09	70	0.51	10
SC-P2PU-110	110	1.6	0.2	0.08	77	0.55	10
SC-P2PU-120	120	1.6	0.2	0.08	85	0.60	10
SC-P2PU-125	125	1.6	0.2	0.08	88	0.65	10
SC-P2PU-130	130	1.6	0.18	0.08	92	0.69	10
SC-P2PU-140	140	1.6	0.15	0.06	95	0.71	10
SC-P2PU-150	150	1.6	0.1	0.06	105	0.78	10
SC-P2PU-160	160	1.6	0.1	0.06	112	0.81	10
SC-P2PU-170	170	1.6	0.09	0.05	117	0.88	10
SC-P2PU-175	175	1.6	0.09	0.05	123	0.90	10
SC-P2PU-180	180	1.6	0.08	0.05	131	0.98	10
SC-P2PU-190	190	1.6	0.08	0.05	134	1.02	10
SC-P2PU-200	200	2	0.08	0.05	140	1.05	10
SC-P2PU-225	225	2	0.05	0.04	158	1.09	10
SC-P2PU-220	220	2	0.05	0.04	161	1.12	10
SC-P2PU-250	250	2	0.05	0.04	175	1.25	10
SC-P2PU-275	275	2	0.03	0.04	190	1.40	10
SC-P2PU-300	300	2	0.03	0.03	210	1.55	10
SC-P2PU-305	305	2	0.03	0.03	229	1.57	10
SC-P2PU-320	320	2	0.03	0.03	236	1.69	10
SC-P2PU-350	350	2	0.02	0.02	245	1.80	10
SC-P2PU-400	400	2	0.02	0.02	280	2.10	10
SC-P2PU-450	450	2	0.01	0.01	315	2.35	10
SC-P2PU-500	500	2	0.01	0.01	350	2.62	10

Code example for AE version: SC-P2PUAE-025
AS version: SC-P2PUAS-025
PAS version: SC-P2PUPAS-025

INDUSTRIAL HOSES - ducting and ventilation

Abrasion resistant hoses



P 1 L PU SE-A

Material: Transparent polyester-polyurethane
(AE version polyether- polyurethane)
Wall thickness: 0.4 mm
Reinforcement: Steel wire helix
Working temp.: From -40°C up to +100°C

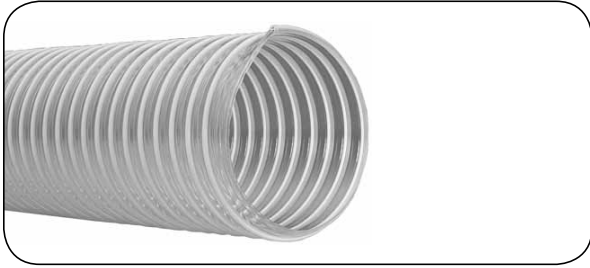
Lightweight, highly flexible hose designed to remove light, loose materials. Widely used in woodworking and furniture industry. Highly resistant to abrasion and mineral oils. Flame retardant, compliant with DIN 4102 B1. Electrically conductive according to BGI 739 after grounding the wire. Remains flexible in low temperatures. The hose is marked with an arrow indicating the correct direction of flow. Other diameters available in the range of 20 ÷ 800 mm. AE version - resistant to hydrolysis and microbes.

code	I.D. [mm]	working pressure [bar]	vacuum [bar]	bending radius [mm]	weight [kg/m]	standard length [m]
SC-P1LPUSEA-025	25	0.6	0.3	16	0.13	10
SC-P1LPUSEA-030	30	0.55	0.25	20	0.15	10
SC-P1LPUSEA-040	40	0.5	0.25	28	0.23	10
SC-P1LPUSEA-050	50	0.4	0.2	35	0.29	10
SC-P1LPUSEA-060	60	0.4	0.16	42	0.34	10
SC-P1LPUSEA-080	80	0.27	0.1	56	0.46	10
SC-P1LPUSEA-100	100	0.2	0.09	70	0.52	10
SC-P1LPUSEA-120	120	0.2	0.08	88	0.61	10
SC-P1LPUSEA-140	140	0.15	0.08	92	0.66	10
SC-P1LPUSEA-150	150	0.1	0.07	105	0.78	10
SC-P1LPUSEA-160	160	0.09	0.06	114	0.85	10
SC-P1LPUSEA-180	180	0.09	0.06	128	0.95	10
SC-P1LPUSEA-200	200	0.08	0.05	140	1.02	10
SC-P1LPUSEA-215	215	0.07	0.05	185	1.14	10
SC-P1LPUSEA-225	225	0.06	0.04	200	1.20	10
SC-P1LPUSEA-250	250	0.05	0.04	205	1.28	10
SC-P1LPUSEA-300	300	0.03	0.03	210	1.54	10
SC-P1LPUSEA-400	400	0.01	0.01	280	2.05	10
SC-P1LPUSEA-500	500	0.01	0.01	350	2.56	10
SC-P1LPUSEA-600	600	0.01	0.01	400	4.60	10

Code example for AE version: SC-P1LPUESEA-025

INDUSTRIAL HOSES - ducting and ventilation

Abrasion resistant hoses



P 1 N P U

Material: Transparent polyester-polyurethane (standard and AS version)
Polyether- polyurethane (AE and EL version)

Wall thickness: 0.5 mm (0.6 mm from Ø 100 mm)

Reinforcement: PVC-coated steel wire helix

Working temp.: From -40°C up to +100°C

Lightweight, flexible hose designed to remove and transfer light granules in food (AE version), paper making and textile industry. High abrasion resistance. Other diameters available in the range of 10 ÷ 408 mm.
AE version - resistant to hydrolysis and microbes, compliant with FDA regulations, EU Directives
AS version - antistatic ($R < 10^8 \Omega$) - TRBS 2153.
EL version - electrically conductive ($R < 10^4 \Omega$) according to TRBS 2153 and ATEX 94/9/EC Directive, resistant to hydrolysis and microbes. Colour: black.

code	I.D. [mm]	wire [mm]	working pressure [bar]	vacuum [bar]	bending radius [mm]	weight [kg/m]	standard length [m]
SC-P1NPU-013	13	0.8	2	0.5	13	0.07	10
SC-P1NPU-020	20	1	1.8	0.45	20	0.11	10
SC-P1NPU-025	25	1	1.65	0.4	25	0.16	10
SC-P1NPU-030	30	1	1.5	0.35	30	0.18	10
SC-P1NPU-040	40	1	1.4	0.3	40	0.22	10
SC-P1NPU-045	45	1	1.3	0.28	45	0.25	10
SC-P1NPU-050	50	1	1.3	0.28	50	0.27	10
SC-P1NPU-060	60	1.5	1.1	0.25	60	0.47	10
SC-P1NPU-070	70	1.5	0.9	0.22	70	0.53	10
SC-P1NPU-075	75	1.5	0.8	0.2	75	0.59	10
SC-P1NPU-080	80	1.5	0.7	0.18	80	0.65	10
SC-P1NPU-090	90	1.5	0.6	0.15	90	0.72	10
SC-P1NPU-100	100	1.8	0.6	0.15	100	0.79	10
SC-P1NPU-110	110	1.8	0.6	0.15	110	0.79	10
SC-P1NPU-120	120	1.8	0.5	0.15	120	0.85	10
SC-P1NPU-125	125	1.8	0.4	0.12	125	0.98	10
SC-P1NPU-130	130	1.8	0.3	0.12	130	1.02	10
SC-P1NPU-140	140	1.8	0.3	0.12	140	1.05	10
SC-P1NPU-150	150	1.8	0.25	0.1	150	1.18	10
SC-P1NPU-160	160	2	0.25	0.1	160	1.32	10
SC-P1NPU-170	170	2	0.25	0.1	170	1.40	10
SC-P1NPU-175	175	2	0.25	0.1	175	1.45	10
SC-P1NPU-180	180	2	0.2	0.09	180	1.50	10
SC-P1NPU-200	200	2	0.2	0.09	200	1.67	10
SC-P1NPU-225	225	2	0.2	0.09	225	1.88	10
SC-P1NPU-250	250	2.2	0.15	0.06	250	2.05	10
SC-P1NPU-275	275	2.2	0.15	0.06	275	2.24	10
SC-P1NPU-300	300	2.2	0.12	0.06	300	2.45	10
SC-P1NPU-325	325	2.2	0.12	0.05	325	2.65	10
SC-P1NPU-350	350	2.2	0.1	0.04	350	2.85	10
SC-P1NPU-375	375	2.2	0.08	0.03	375	3.05	10
SC-P1NPU-400	400	2.2	0.08	0.02	400	3.25	10

Code example for AE version: SC-P1NPUAE-013
AS version: SC-P1NPUAS-013
EL version: SC-P1NPUEL-013

INDUSTRIAL HOSES - ducting and ventilation

Abrasion resistant hoses



P 1 N PU SE-A

Material: Transparent polyester-polyurethane
(AE version polyether- polyurethane)
Wall thickness: 0.5 mm (0.6 mm from Ø 60 mm)
Reinforcement: Steel wire helix
Working temp.: From -40°C up to +100°C

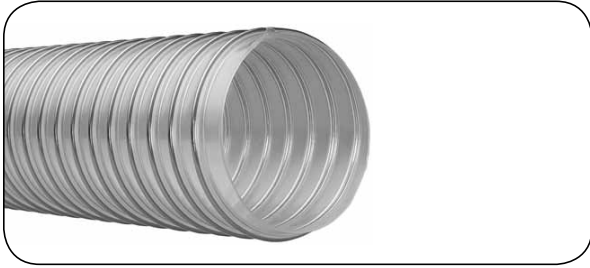
Lightweight, flexible hose designed for suction of dust and tiny particles. Widely used in woodworking and furniture industry. Excellent abrasion resistance. Flame retardant, compliant with DIN 4102 B1. Electrically conductive according to BGI 739 by grounding the wire. The hose is marked with an arrow indicating the correct direction of flow. Other diameters available in the range of 20 ÷ 408 mm.
AE version - resistant to hydrolysis and microbes.

code	I.D. [mm]	wire [mm]	working pressure [bar]	vacuum [bar]	bending radius [mm]	weight [kg/m]	standard length [m]
SC-P1NPUSEA-020	20	1	1.9	0.55	20	0.14	10
SC-P1NPUSEA-025	25	1	1.7	0.45	25	0.17	10
SC-P1NPUSEA-030	30	1	1.65	0.45	30	0.19	10
SC-P1NPUSEA-032	32	1	1.6	0.42	32	0.20	10
SC-P1NPUSEA-035	35	1	1.5	0.35	35	0.21	10
SC-P1NPUSEA-038	38	1	1.5	0.3	38	0.23	10
SC-P1NPUSEA-040	40	1	1.4	0.3	40	0.25	10
SC-P1NPUSEA-050	50	1	1.3	0.28	50	0.31	10
SC-P1NPUSEA-060	60	1.5	1.1	0.25	60	0.52	10
SC-P1NPUSEA-070	70	1.5	0.9	0.22	70	0.60	10
SC-P1NPUSEA-075	75	1.5	0.8	0.2	75	0.65	10
SC-P1NPUSEA-080	80	1.5	0.8	0.2	80	0.68	10
SC-P1NPUSEA-090	90	1.5	0.7	0.16	90	0.73	10
SC-P1NPUSEA-100	100	1.8	0.6	0.15	100	0.83	10
SC-P1NPUSEA-102	102	1.8	0.6	0.15	102	0.86	10
SC-P1NPUSEA-110	110	1.8	0.5	0.14	110	0.92	10
SC-P1NPUSEA-120	120	1.8	0.45	0.14	120	0.95	10
SC-P1NPUSEA-125	125	1.8	0.4	0.12	125	1.03	10
SC-P1NPUSEA-127	127	1.8	0.4	0.12	127	1.07	10
SC-P1NPUSEA-130	130	1.8	0.3	0.12	130	1.10	10
SC-P1NPUSEA-140	140	1.8	0.3	0.12	140	1.12	10
SC-P1NPUSEA-150	150	1.8	0.25	0.1	150	1.24	10
SC-P1NPUSEA-152	152	1.8	0.25	0.1	152	1.28	10
SC-P1NPUSEA-160	160	2	0.22	0.1	160	1.35	10
SC-P1NPUSEA-170	170	2	0.22	0.1	170	1.40	10
SC-P1NPUSEA-175	175	2	0.22	0.1	175	1.46	10
SC-P1NPUSEA-180	180	2	0.22	0.1	180	1.51	10
SC-P1NPUSEA-200	200	2	0.2	0.09	200	1.68	10
SC-P1NPUSEA-215	215	2	0.2	0.09	200	1.81	10
SC-P1NPUSEA-225	225	2	0.15	0.09	225	1.90	10
SC-P1NPUSEA-250	250	2.2	0.15	0.08	250	1.97	10
SC-P1NPUSEA-275	275	2.2	0.15	0.06	275	2.24	10
SC-P1NPUSEA-300	300	2.2	0.12	0.06	300	2.36	10
SC-P1NPUSEA-350	350	2.2	0.1	0.04	350	2.75	10
SC-P1NPUSEA-400	400	2.2	0.08	0.02	400	3.14	10

Code example for AE version: SC-P1NPUAEESEA-020

INDUSTRIAL HOSES - ducting and ventilation

Abrasion resistant hoses



P 7 L PU

Material: Transparent polyester-polyurethane (standard and AS version)
Polyether- polyurethane (AE and PAS version)

Wall thickness: 0.7 mm

Reinforcement: Steel wire helix

Working temp.: From -40°C up to +100°C

Robust, smooth bore hose designed to extract and transport highly abrasive materials. Non-toxic and oil resistant. Widely used in woodworking, metalworking and plastic industry. Other diameters available in the range of 25 ÷ 500 mm.

AE version - resistant to hydrolysis and microbes, compliant with FDA regulations and EU Directives

AS version - antistatic ($R < 10^8 \Omega$) - TRBS 2153.

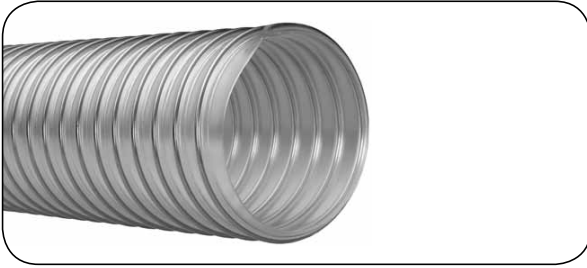
PAS version - resistant to microbes and hydrolysis, compliant with FDA 21 CFR 177.2600, antistatic ($R < 10^9 \Omega$) according to TRBS 2153, with stainless steel helix.

code	I.D. [mm]	working pressure [bar]	vacuum [bar]	bending radius [mm]	weight [kg/m]	standard length [m]
SC-P7LPU-030	30	1.3	0.4	30	0.25	10
SC-P7LPU-040	40	1.15	0.3	40	0.40	10
SC-P7LPU-050	50	1	0.25	50	0.45	10
SC-P7LPU-060	60	1	0.25	60	0.48	10
SC-P7LPU-065	65	0.9	0.2	65	0.55	10
SC-P7LPU-070	70	0.8	0.2	70	0.60	10
SC-P7LPU-080	80	0.8	0.2	80	0.65	10
SC-P7LPU-090	90	0.6	0.18	90	0.74	10
SC-P7LPU-100	100	0.6	0.18	100	0.84	10
SC-P7LPU-110	110	0.5	0.15	110	0.90	10
SC-P7LPU-120	120	0.5	0.15	120	0.95	10
SC-P7LPU-125	125	0.4	0.1	125	0.98	10
SC-P7LPU-130	130	0.4	0.1	130	1.06	10
SC-P7LPU-140	140	0.40	0.1	140	1.09	10
SC-P7LPU-150	150	0.38	0.1	150	1.12	10
SC-P7LPU-160	160	0.35	0.08	160	1.20	10
SC-P7LPU-180	180	0.3	0.07	180	1.45	10
SC-P7LPU-200	200	0.25	0.05	200	1.50	10
SC-P7LPU-215	215	0.25	0.05	215	1.76	10
SC-P7LPU-220	220	0.2	0.04	220	1.80	10
SC-P7LPU-225	225	0.2	0.04	225	1.85	10
SC-P7LPU-250	250	0.2	0.04	250	1.93	10
SC-P7LPU-300	300	0.15	0.02	300	2.31	10

Code example for AE version: SC-P7LPUAE-030
AS version: SC-P7LPUAS-030
PAS version: SC-P7LPU PAS-030

INDUSTRIAL HOSES - ducting and ventilation

Abrasion resistant hoses



P 1 V PU SE-A

Material: Transparent polyester-polyurethane
(AE version polyether- polyurethane)
Wall thickness: 0.7 mm
Reinforcement: Steel wire helix
Working temp.: From -40°C up to +100°C

Flexible, oil resistant hose designed to extract highly abrasive materials. Widely used in woodworking and furniture industry. Flame retardant, compliant with DIN 4102 B1. Electrically conductive according to BGI 739 by grounding the wire. The hose is marked with an arrow indicating the correct direction of flow. Other diameters available in the range of 25 ÷ 500 mm.

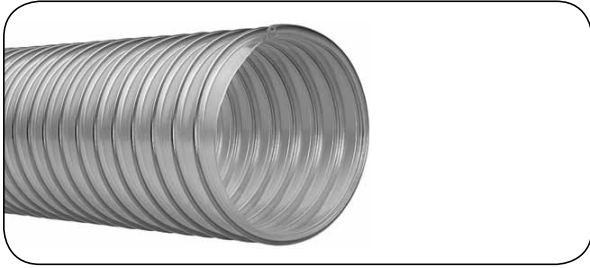
AE version - resistant to hydrolysis and microbes.

code	I.D. [mm]	working pressure [bar]	vacuum [bar]	bending radius [mm]	weight [kg/m]	standard length [m]
SC-P1VPUSEA-030	30	1.3	0.3	30	0.25	10
SC-P1VPUSEA-040	40	1.15	0.4	40	0.40	10
SC-P1VPUSEA-050	50	1	0.25	50	0.45	10
SC-P1VPUSEA-060	60	1	0.25	60	0.48	10
SC-P1VPUSEA-080	80	0.8	0.2	80	0.65	10
SC-P1VPUSEA-100	100	0.6	0.18	100	0.84	10
SC-P1VPUSEA-120	120	0.5	0.15	120	0.95	10
SC-P1VPUSEA-140	140	0.4	0.1	140	1.06	10
SC-P1VPUSEA-150	150	0.38	0.1	150	1.12	10
SC-P1VPUSEA-160	160	0.35	0.08	160	1.20	10
SC-P1VPUSEA-180	180	0.3	0.07	180	1.45	10
SC-P1VPUSEA-200	200	0.25	0.05	200	1.50	10
SC-P1VPUSEA-215	215	0.25	0.05	215	1.76	10
SC-P1VPUSEA-225	225	0.2	0.04	225	1.85	10
SC-P1VPUSEA-250	250	0.2	0.04	250	1.93	10
SC-P1VPUSEA-300	300	0.15	0.02	300	2.31	10
SC-P1VPUSEA-350	350	0.13	0.01	350	2.50	10
SC-P1VPUSEA-400	400	0.1	0.01	400	2.85	10

Code example for AE version: SC-P1VPUAEESEA-030

INDUSTRIAL HOSES - ducting and ventilation

Abrasion resistant hoses



P 1 S P U S E - A

Material: Transparent polyester-polyurethane
(AE version polyether- polyurethane)
Wall thickness: 0.9 mm
Reinforcement: Steel wire helix
Working temp.: From -40°C up to +100°C

Flexible, oil resistant hose designed to extract highly abrasive materials. Widely used in woodworking and furniture industry. Flame retardant, compliant with DIN 4102 B1. Electrically conductive according to BGI 739 by grounding the wire. The hose is marked with an arrow indicating the correct direction of flow. Other diameters available in the range of 25 ÷ 500 mm.

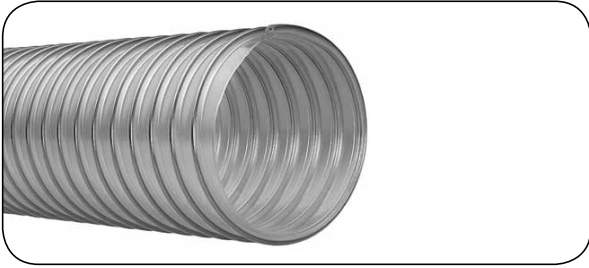
AE version - resistant to hydrolysis and microbes.

code	I.D. [mm]	working pressure [bar]	vacuum [bar]	bending radius [mm]	weight [kg/m]	standard length [m]
SC-P1SPUSEA-040	40	1.2	0.4	46	0.42	10
SC-P1SPUSEA-050	50	1.15	0.25	55	0.48	10
SC-P1SPUSEA-060	60	1.1	0.25	65	0.54	10
SC-P1SPUSEA-080	80	1	0.2	85	0.72	10
SC-P1SPUSEA-100	100	0.65	0.18	106	1.02	10
SC-P1SPUSEA-120	120	0.6	0.15	126	1.15	10
SC-P1SPUSEA-140	140	0.5	0.1	146	1.25	10
SC-P1SPUSEA-150	150	0.4	0.1	158	1.32	10
SC-P1SPUSEA-160	160	0.35	0.08	168	1.41	10
SC-P1SPUSEA-180	180	0.3	0.07	188	1.75	10
SC-P1SPUSEA-200	200	0.25	0.05	208	1.94	10
SC-P1SPUSEA-215	215	0.25	0.05	224	2.08	10
SC-P1SPUSEA-225	225	0.2	0.04	232	2.18	10
SC-P1SPUSEA-250	250	0.2	0.04	260	2.42	10
SC-P1SPUSEA-300	300	0.15	0.02	310	3.15	10
SC-P1SPUSEA-350	350	0.13	0.01	360	3.82	10
SC-P1SPUSEA-400	400	0.1	0.01	410	4.31	10

Code example for AE version: SC-P1SPUAESE-040

INDUSTRIAL HOSES - ducting and ventilation

Abrasion resistant hoses



P 2 CNC

Material: Transparent polyether-polyurethane

Reinforcement: Steel wire helix

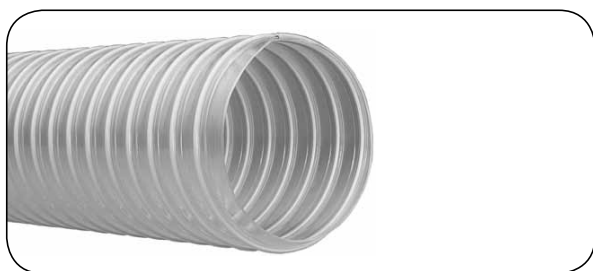
Working temp.: From -40°C up to +100°C

Flexible hose designed to extract oil fumes, dust, sawdust, light loose products, etc. Widely used in woodworking, construction industry, particularly recommended for CNC processing centers (woodworking). Flame retardant, compliant with DIN 4102 B1, resistant to hydrolysis and microbes. Free of halogens and plasticizers. Electrically conductive according to BGI 739-2 by grounding the wire. Other diameters available in the range of 80 ÷ 600 mm.

code	I.D. [mm]	wall thickness [mm]	working pressure [bar]	vacuum [bar]	bending radius [mm]	weight [kg/m]	standard length [m]
SC-P2CNC-080	80	0.65	0.35	0.2	80	0.65	10
SC-P2CNC-100	100	0.65	0.3	0.15	100	0.80	10
SC-P2CNC-120	120	0.65	0.3	0.12	120	0.95	10
SC-P2CNC-140	140	0.65	0.2	0.1	140	1.11	10
SC-P2CNC-160	160	0.8	0.2	0.08	160	1.79	10
SC-P2CNC-180	180	0.8	0.15	0.07	180	2.00	10
SC-P2CNC-200	200	0.8	0.15	0.05	200	2.22	10
SC-P2CNC-250	250	0.8	0.1	0.04	250	2.76	10
SC-P2CNC-300	300	0.8	0.05	0.03	300	3.30	10
SC-P2CNC-325	325	0.8	0.03	0.03	325	3.57	10
SC-P2CNC-350	350	0.8	0.02	0.02	350	3.84	10
SC-P2CNC-400	400	0.8	0.02	0.02	400	4.38	10
SC-P2CNC-450	450	0.8	0.01	0.01	450	4.92	10
SC-P2CNC-500	500	0.8	0.01	0.01	500	5.46	10
SC-P2CNC-600	600	0.8	0.01	0.01	600	6.53	10

INDUSTRIAL HOSES - ducting and ventilation

Abrasion resistant hoses



P 3 PU

Material: Transparent polyester-polyurethane (standard and AS version)
Polyether- polyurethane (AE and EL version)

Reinforcement: PVC-coated steel wire helix

Working temp.: From -40°C up to +100°C

Flexible hose designed to extract highly abrasive materials. Widely used in woodworking, metalworking, plastics and food industry. Other diameters available in the range of 20 ÷ 500 mm.

AE - version - resistant to hydrolysis and microbes, compliant with FDA regulations and EU Directives.

AS version - antistatic (R <10⁸ Ω) - TRBS 2153.

EL version - electrically conductive (R <10⁴ Ω) according to TRBS 2153 and ATEX 94/9/EC Directive, resistant to hydrolysis and microbes. Colour: black.

code	I.D. [mm]	wire [mm]	wall thickness [mm]	working pressure [bar]	vacuum [bar]	bending radius [mm]	weight [kg/m]	standard length [m]
SC-P3PU-020	20	1	0.8	2.3	0.7	30	0.17	10
SC-P3PU-025	25	1	0.8	2.1	0.5	38	0.21	10
SC-P3PU-030	30	1	0.8	2.1	0.5	45	0.25	10
SC-P3PU-040	40	1.5	0.9	2	0.45	60	0.35	10
SC-P3PU-045	45	1.5	0.9	1.8	0.4	68	0.39	10
SC-P3PU-050	50	1.5	0.9	1.8	0.4	75	0.44	10
SC-P3PU-055	55	1.5	0.9	1.6	0.35	83	0.49	10
SC-P3PU-060	60	1.5	0.9	1.6	0.35	90	0.53	10
SC-P3PU-065	65	1.5	0.9	1.5	0.35	98	0.58	10
SC-P3PU-070	70	1.5	0.9	1.5	0.35	105	0.61	10
SC-P3PU-080	80	1.5	0.9	1.2	0.3	120	0.67	10
SC-P3PU-090	90	1.5	0.9	1	0.3	135	0.88	10
SC-P3PU-100	100	1.8	1.1	1	0.3	150	1.02	10
SC-P3PU-110	110	1.8	1.1	0.8	0.25	165	1.12	10
SC-P3PU-120	120	1.8	1.1	0.8	0.25	180	1.22	10
SC-P3PU-125	125	1.8	1.1	0.75	0.25	185	1.28	10
SC-P3PU-130	130	1.8	1.1	0.55	0.22	195	1.32	10
SC-P3PU-140	140	1.8	1.1	0.5	0.2	210	1.38	10
SC-P3PU-150	150	1.8	1.1	0.5	0.2	225	1.46	10
SC-P3PU-160	160	1.8	1.1	0.45	0.15	240	1.56	10
SC-P3PU-170	170	1.8	1.1	0.45	0.15	255	1.64	10
SC-P3PU-175	175	1.8	1.1	0.45	0.15	260	1.70	10
SC-P3PU-180	180	1.8	1.1	0.45	0.15	260	1.80	10
SC-P3PU-200	200	1.8	1.1	0.35	0.12	300	1.94	10
SC-P3PU-220	220	3	1.3	0.25	0.1	330	2.20	10
SC-P3PU-225	225	3	1.3	0.25	0.1	338	2.32	10
SC-P3PU-250	250	3	1.3	0.25	0.1	375	3.15	10
SC-P3PU-300	300	3	1.3	0.2	0.09	450	3.78	10
SC-P3PU-325	325	3	1.3	0.15	0.09	488	4.10	10
SC-P3PU-350	350	3	1.3	0.15	0.09	525	4.41	10
SC-P3PU-400	400	3	1.3	0.1	0.08	600	5.04	10
SC-P3PU-450	450	3	1.3	0.08	0.06	675	6.71	10
SC-P3PU-500	500	3	1.3	0.05	0.04	750	7.20	10

Code example for AE version: SC-P3PUAE-020

AS version: SC-P3PUAS-020

EL version: SC-P3PUEL-020

INDUSTRIAL HOSES - ducting and ventilation

Abrasion resistant hoses



P 7 M P U A E

Material: Transparent polyester-polyurethane (AS version)
Transparent polyether- polyurethane (AE and SAM version)

Wall thickness: 1.4 mm

Reinforcement: Steel wire helix

Working temp.: From -40°C up to +100°C

Robust, flexible, smooth bore hose designed to extract and transport highly abrasive materials. Non-toxic and oil resistant. Widely used in woodworking, metalworking, plastics and food industry. Other diameters available in the range of 20 ÷ 400 mm.

AE version - resistant to hydrolysis and microbes, compliant with FDA regulations and EU Directives.

AS version - antistatic ($R < 10^8 \Omega$) - TRBS 2153.

SAM version - electrically conductive ($R < 10^4 \Omega$) - TRBS 2153, colour: black.

code	I.D. [mm]	working pressure [bar]	vacuum [bar]	bending radius [mm]	weight [kg/m]	standard length [m]
SC-P7MPUAE-032	32	3	0.9	48	0.38	10
SC-P7MPUAE-035	35	2.6	0.8	53	0.45	10
SC-P7MPUAE-038	38	2.4	0.75	57	0.52	10
SC-P7MPUAE-040	40	2.3	0.7	60	0.56	10
SC-P7MPUAE-050	50	1.9	0.6	75	0.67	10
SC-P7MPUAE-060	60	1.8	0.55	90	0.79	10
SC-P7MPUAE-075	75	1.2	0.5	113	0.98	10
SC-P7MPUAE-080	80	1.2	0.45	120	1.09	10
SC-P7MPUAE-090	90	1.1	0.45	135	1.23	10
SC-P7MPUAE-100	100	1.1	0.4	150	1.36	10
SC-P7MPUAE-110	110	1	0.35	165	1.38	10
SC-P7MPUAE-120	120	0.9	0.3	180	1.42	10
SC-P7MPUAE-125	125	0.8	0.25	188	1.54	10
SC-P7MPUAE-140	140	0.7	0.2	210	1.75	10
SC-P7MPUAE-150	150	0.7	0.2	225	1.82	10
SC-P7MPUAE-160	160	0.6	0.2	240	2.15	10
SC-P7MPUAE-180	180	0.5	0.15	270	2.55	10
SC-P7MPUAE-200	200	0.5	0.15	300	2.92	10
SC-P7MPUAE-225	225	0.4	0.1	338	3.25	10
SC-P7MPUAE-250	250	0.3	0.1	375	3.57	10
SC-P7MPUAE-300	300	0.3	0.1	450	4.31	10

Code example for AS version: SC-P7MPUAS-032

SAM version: SC-P7MPUSAM-032

INDUSTRIAL HOSES - ducting and ventilation

Abrasion resistant hoses



P 7 N PU

Material: Polyester-polyurethane
Wall thickness: 1.4 mm
Reinforcement: Steel wire helix
Working temp.: From -40°C up to +100°C

Robust, flexible, smooth bore hose designed to extract and transport highly abrasive materials. Non-toxic and oil resistant. Widely used in woodworking, metalworking and plastics industry. Other diameters available in the range of 25 ÷ 400 mm.

AS version - antistatic (R <10⁸ Ω) TRBS 2153.

code	I.D. [mm]	working pressure [bar]	vacuum [bar]	bending radius [mm]	weight [kg/m]	standard length [m]
SC-P7NPU-032	32	3	0.9	48	0.38	10
SC-P7NPU-035	35	2.6	0.8	53	0.45	10
SC-P7NPU-038	38	2.4	0.75	57	0.52	10
SC-P7NPU-040	40	2.3	0.7	60	0.56	10
SC-P7NPU-050	50	1.9	0.6	75	0.67	10
SC-P7NPU-060	60	1.8	0.55	90	0.79	10
SC-P7NPU-075	75	1.2	0.5	113	0.98	10
SC-P7NPU-080	80	1.2	0.45	120	1.09	10
SC-P7NPU-090	90	1.1	0.45	135	1.23	10
SC-P7NPU-100	100	1.1	0.4	150	1.36	10
SC-P7NPU-110	110	1	0.35	165	1.38	10
SC-P7NPU-120	120	0.9	0.3	180	1.42	10
SC-P7NPU-125	125	0.8	0.25	188	1.54	10
SC-P7NPU-140	140	0.7	0.2	210	1.75	10
SC-P7NPU-150	150	0.7	0.2	225	1.82	10
SC-P7NPU-160	160	0.6	0.2	240	2.15	10
SC-P7NPU-180	180	0.5	0.15	270	2.55	10
SC-P7NPU-200	200	0.5	0.15	300	2.92	10
SC-P7NPU-225	225	0.4	0.1	338	3.25	10
SC-P7NPU-250	250	0.3	0.1	375	3.57	10
SC-P7NPU-300	300	0.3	0.1	450	4.31	10

Code example for AS version: SC-P7NPUAS-032

INDUSTRIAL HOSES - ducting and ventilation

Abrasion resistant hoses



P 3 S PU / P 3 SV PU

Material: Transparent polyester-polyurethane (standard and AS version)
Polyether- polyurethane (AE version)
Wall thickness: 2 mm (P 3 SV PU - 2.5 mm)
Reinforcement: Steel wire helix
Working temp.: From -40°C up to +100°C

Robust, smooth bore hose designed to extract and transport highly abrasive materials. Resistant to high vacuum pressure. Non-toxic and oil resistant. Widely used in woodworking, metalworking, plastics and food industry. The hose is marked with an arrow indicating the correct direction of flow. Other diameters available in the range of 25 ÷ 350 mm.

AE version - resistant to hydrolysis and microbes, compliant with FDA regulations and EU Directives.

AS version - antistatic (R <10⁸ Ω) TRBS 2153.

code	I.D. [mm]	working pressure [bar]	vacuum [bar]	bending radius [mm]	weight [kg/m]	standard length [m]
SC-P3SPU-030	30	4.6	0.95	130	0.61	10
SC-P3SPU-040	40	4.2	0.95	160	0.76	10
SC-P3SPU-045	45	3.8	0.95	180	0.88	10
SC-P3SPU-050	50	3.8	0.95	200	1.00	10
SC-P3SPU-060	60	3.3	0.95	240	1.32	10
SC-P3SPU-070	70	2.7	0.95	280	1.41	10
SC-P3SPU-075	75	2.7	0.95	300	1.51	10
SC-P3SPU-080	80	2.4	0.9	320	1.61	10
SC-P3SPU-090	90	2.1	0.9	360	1.81	10
SC-P3SPU-100	100	1.9	0.9	400	2.13	10
SC-P3SPU-110	110	1.5	0.9	440	2.29	10
SC-P3SPU-120	120	1.45	0.9	480	2.48	10
SC-P3SPU-125	125	1.45	0.9	500	2.56	10
SC-P3SPU-140	100	1.25	0.85	560	3.51	10
SC-P3SPU-150	150	1.25	0.85	600	4.08	10
SC-P3SPU-160	160	1.15	0.85	640	4.48	10
SC-P3SPU-180	180	0.95	0.85	720	4.91	10
SC-P3SPU-200	200	0.95	0.85	800	5.45	10

Code example for AE version: SC-P3SPUAE-030

AS version: SC-P3SPUAS-030

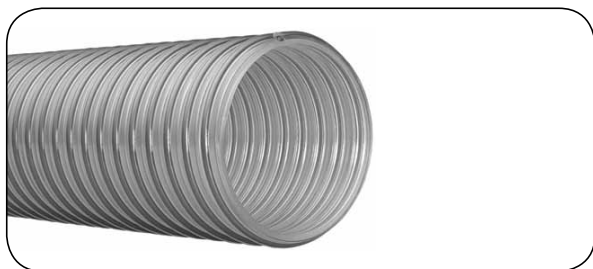
code	I.D. [mm]	working pressure [bar]	vacuum [bar]	bending radius [mm]	weight [kg/m]	standard length [m]
SC-P3SVPU-050	50	3.25	0.85	125	1.35	10
SC-P3SVPU-075	75	2.50	0.8	190	1.95	10
SC-P3SVPU-100	100	1.65	0.7	250	2.59	10
SC-P3SVPU-125	125	1.4	0.65	312	3.15	10
SC-P3SVPU-150	150	1.15	0.55	375	3.72	10
SC-P3SVPU-200	200	0.85	0.41	500	4.40	10
SC-P3SVPU-250	250	0.6	0.32	625	5.50	10

Code example for AE version: SC-P3SVPUAE-030

AS version: SC-P3SVPUAS-030

INDUSTRIAL HOSES - ducting and ventilation

Abrasion resistant hoses



P 7 XS PU AE

Material: Transparent polyether-polyurethane

Wall thickness: 3.5 mm

Reinforcement: Steel wire helix

Working temp.: From -40°C up to +100°C

Robust, smooth bore hose designed to extract and transport highly abrasive materials i.e. sand, gravel, seeds. Resistant to high vacuum, hydrolysis, microbes and oil. Widely used in woodworking, metalworking and plastics industry. The hose is marked with an arrow indicating the correct direction of flow. Other diameters available in the range of 80 ÷ 250 mm. Standard length for diameters 80 -200 mm is 10 m, for larger diameters - on request.

code	I.D. [mm]	working pressure [bar]	vacuum [bar]	bending radius [mm]	weight [kg/m]
SC-P7XSPUAE-080	80	2.58	0.99	294	2.15
SC-P7XSPUAE-090	90	2.17	0.99	324	2.39
SC-P7XSPUAE-100	100	1.94	0.99	354	2.63
SC-P7XSPUAE-110	110	1.75	0.95	384	2.87
SC-P7XSPUAE-120	120	1.59	0.95	414	3.11
SC-P7XSPUAE-130	130	1.54	0.9	444	3.35
SC-P7XSPUAE-140	140	1.42	0.9	474	3.60
SC-P7XSPUAE-150	150	1.32	0.85	504	3.84
SC-P7XSPUAE-160	160	1.29	0.85	534	4.08
SC-P7XSPUAE-170	170	1.21	0.8	564	4.32
SC-P7XSPUAE-180	180	1.14	0.75	594	4.56
SC-P7XSPUAE-190	190	1.08	0.7	624	4.80
SC-P7XSPUAE-200	200	1.02	0.65	654	5.04
SC-P7XSPUAE-210	210	0.97	0.6	684	5.28
SC-P7XSPUAE-220	220	0.92	0.55	714	5.53
SC-P7XSPUAE-230	230	0.88	0.50	744	5.77
SC-P7XSPUAE-240	240	0.84	0.45	774	6.01
SC-P7XSPUAE-250	250	0.81	0.4	804	6.25

INDUSTRIAL HOSES - ducting and ventilation

Abrasion resistant hoses



OREGON PU

Material: Transparent polyurethane
Reinforcement: PVC wire helix
Working temp.: From -25°C up to +85°C

Lightweight, flexible and smooth bore hose designed to extract dust, yarn, polluted air, powders, granules, etc. Widely used in woodworking, construction and food industry. Excellent resistance to abrasion, weather conditions and biological corrosion. Antistatic version includes copper antistatic wire ($R = 0075 \Omega/m$). Meets the requirements of the European Regulation 1935/2004 CE, UE 10/2011

code	I.D. [mm]	working pressure [bar]	vacuum [bar]	bending radius [mm]	weight (standard) [kg/m]	weight (antistatic) [kg/m]	standard length [m]
ME-OREGONPU-025	25	0.6	0.4	25	0.16	0.19	20
ME-OREGONPU-030	30	0.6	0.4	30	0.19	0.21	20
ME-OREGONPU-032	32	0.6	0.4	32	0.20	0.24	20
ME-OREGONPU-035	35	0.4	0.4	35	0.21	0.25	20
ME-OREGONPU-038	38	0.4	0.3	38	0.25	0.31	20
ME-OREGONPU-040	40	0.4	0.3	40	0.28	0.33	20
ME-OREGONPU-045	45	0.4	0.3	45	0.32	0.37	20
ME-OREGONPU-050	50	0.4	0.3	50	0.39	0.44	20
ME-OREGONPU-060	60	0.4	0.3	60	0.44	0.50	20
ME-OREGONPU-063	63	0.3	0.3	63	0.47	0.53	20
ME-OREGONPU-070	70	0.3	0.3	70	0.60	0.66	20
ME-OREGONPU-075	75	0.3	0.3	75	0.60	0.66	20
ME-OREGONPU-080	80	0.2	0.3	80	0.65	0.74	20
ME-OREGONPU-090	90	0.2	0.3	90	0.75	0.81	20
ME-OREGONPU-100	100	0.2	0.3	100	0.85	0.92	20
ME-OREGONPU-110	110	0.2	0.3	110	1.05	1.12	20
ME-OREGONPU-120	120	0.15	0.3	120	1.10	1.18	20
ME-OREGONPU-125	125	0.15	0.3	125	1.17	1.25	20
ME-OREGONPU-130	130	0.15	0.3	130	1.28	1.35	20
ME-OREGONPU-140	140	0.1	0.3	140	1.40	1.50	20
ME-OREGONPU-150	150	0.1	0.3	150	1.50	1.60	20
ME-OREGONPU-160	160	0.1	0.3	160	1.70	1.78	20
ME-OREGONPU-180	180	0.1	0.3	180	2.00	2.10	10
ME-OREGONPU-200	200	0.1	0.3	200	2.18	2.28	10
ME-OREGONPU-250	250	0.1	0.3	250	2.96	-	10
ME-OREGONPU-300	300	0.1	0.3	300	3.70	-	10

Code example for AE version: ME-OREGONPU/AS-025